



TEMPLAR

INDUSTRIES

WHEN SERVICE MATTERS

Quality. Service. Dedication.

Experience the difference at
Templar Industries.

We know the difference between lip-service and customer service. At Templar, customer service is a way of life.

Our Advantage



Accurate and on-time deliveries



Sufficient stock levels on the items you need



Around the clock customer service



QUICK QUOTES

Our dependable team always operates with a quick response time.



FREIGHT ALLOWED

We cover the freight on orders that meet FFA requirements.



SAME-DAY SHIPPING

We aim to ship each order the same day the order is placed.

STAY
TUNED!



We continue to add new product lines, and sizes & configurations to fill out existing lines. *See inside for more details >>*

16445 Air Center Blvd, Suite 400 • Houston, TX 77032

☎ 832.974.2070

✉ info@templarind.com

🌐 www.templarind.com



Call Us Today

832 974 2070

Dependable Quality.

Our hammer unions are made
to last in the toughest
environments.

NEW HAMMER UNION STYLES



STAINLESS STEEL



FIGURE 211



HOSE BARB UNION

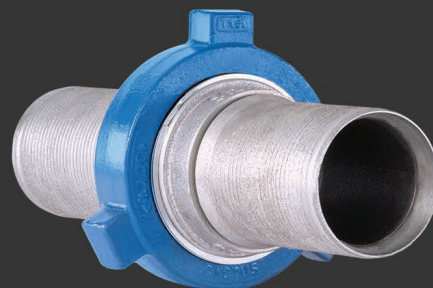


FIGURE 100



FIGURE 200



FIGURE 206



FIGURE 207



FIGURE 301



FIGURE 400



FIGURE 602



FIGURE CGC



FIGURE 1002



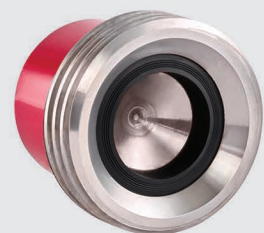
FIGURE 1502



SOLID MALE



SOLID FEMALE

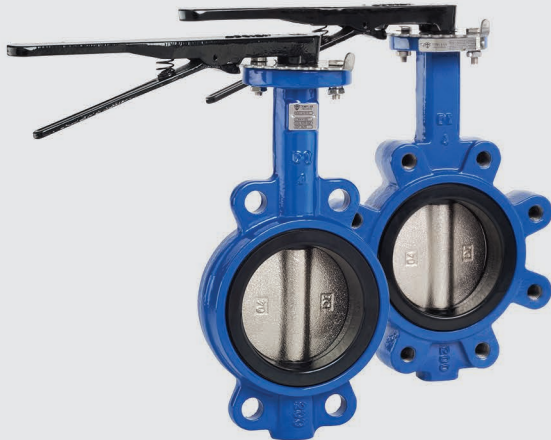


***most unions are available in threaded, butt weld, and socket weld connections - also available in NACE*

Butterfly Valves You Need.

We have the valve you're looking for, whether it's a specific body style, stem type, or disc material.

WAFER & LUG STYLE



SHORT NECK WAFER



INTRODUCING

Templar now offers Square Stem Wafer Style Butterfly Valves in 6-Bolt and 8-Bolt pattern. With optional stem designs and bolting patterns it is easy retrofit or meet your actuation needs.

BUTTERFLY VALVES



EXPANSION JOINTS



SWIVEL JOINTS



SWAGE NIPPLES



BULL PLUGS



EUE FITTINGS



BRASS GATE VALVES



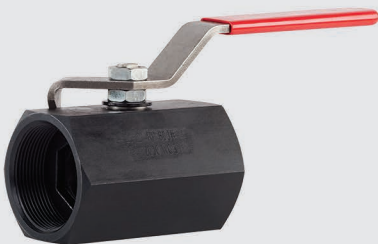
BRASS CHECK VALVES



BRASS BALL VALVES



BARSTOCK VALVES



CS SEAL-WELD



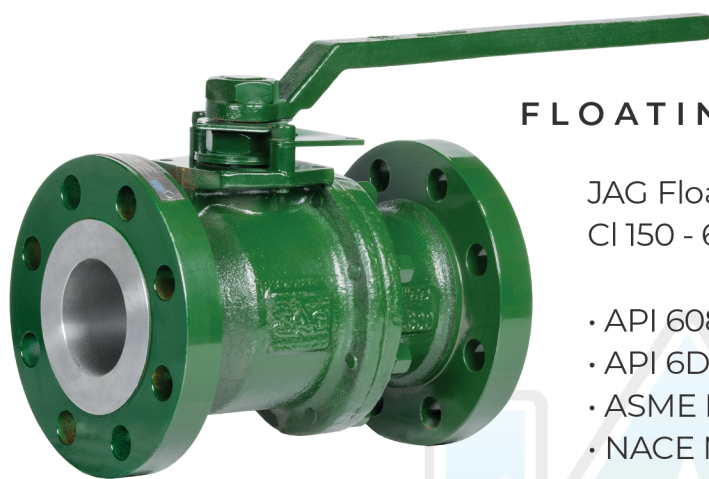
SS SEAL-WELD



Your Source for JAG Valves.

WHEN QUALITY MATTERS

Quality valves ready for
installation when you need them.



FLOATING BALL VALVES

JAG Floating Ball Valves are available in sizes 2" - 8", ASME CI 150 - 600. Also available in Regular and Full Port.

- API 608 Design
- API 6D Inspect & Test
- ASME B16.34
- NACE MR-0175
- Certified Fire Safe to API 607
- ASME B16.10
- ASME B16.5
- Blow Out Proof Stem



TRUNNION BALL VALVES

JAG Trunnion Ball Valves are available in sizes 2" - 16", ASME CI 150-2500. Also available in Regular and Full Port.

- 3PC Forged Steel Body
- API 6D Inspect & Test
- Self Relieving Seats
- NACE MR-0175
- Certified Fire Safe to API 607
- ASME B16.34
- API 608
- Blow-Out Proof Stem



NEW PRODUCTS
COMING SOON!



- RING JOINT GASKETS
- SPIRAL WOUND GASKETS
- OILFIELD BALL VALVES
- SLEEVE COUPLINGS
- SS FLANGED BALL VALVES
- THREADED BUTTERFLY VALVES



Freight Allowed Same-Day Shipping

Ask us for details!



16445 Air Center Blvd, Suite 400 • Houston, Texas 77032

☎ 832.974.2070 ✉ info@templarind.com 💻 www.templarind.com